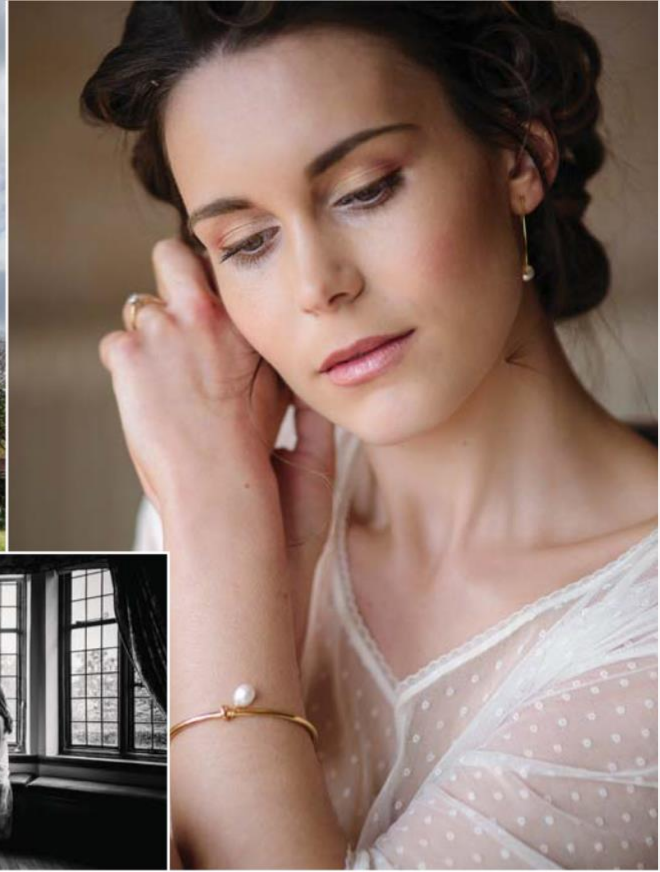


Woodland wonder

Be inspired by this stunning
photo shoot at Hoath House

Images courtesy of Penny Young Photography





Laetitia Rix, a talented make-up artist based in Tunbridge Wells, organised this woodland-inspired photo shoot at the gorgeous Hoath House in Edenbridge. "I wanted to create a set of images that reflected the more relaxed style of weddings that we've been seeing recently," says Laetitia. "I made the willow hoops, and Lara from Darling & Wild adorned them with peonies, jasmine, cotton stems and wheat to match the bouquet and flower crown."

The gorgeous lingerie was provided by Shell Belle Couture, and the model's hair was styled by Hero Hairstylist. "Hoath House was the perfect backdrop, it offered stunning views and a beautiful wooden arch for the ceremony. The pretty lace and silk dresses were provided by Francis Bridal and for her make-up, I used warm rose gold tones to enhance her striking green eyes." ♥

